



MEETING MINUTES

Helms Elementary School Construction Progress Meeting # 9

Date	Time	Purpose	Location
May 30, 2012	9:30am	Weekly Update	Helms ES, T Building
Prepared By – Tim Beally			
See Attached Attendee List			

1) CMPA/Owner Issues

- a) Unit Ventilators
 - i) Twenty-seven UVs arrived and are stored on site.
 - ii) AECOM mentioned to HIG it is important they be properly secured. Any loss or damage will have to be resolved by HIG.
- b) Whiteboards – expected delivery is mid-August. HIG is trying to speed this up.
- c) Public Address System Sub-Contractor
 - i) HIG submitted a request to use Convergent for the PA system installation.
 - ii) AECOM forwarded the request to HISD Alarms for their concurrence.
- d) Chiller Shut Down – HIG will shut down the chiller and drain it for the summer work.
- e) Electrical Sub-Contractor
 - i) HIG provided a letter to AECOM on the proposed electrical sub-contractor K-N-D.
 - ii) AECOM provided it to HISD who provided approval.

2) Architect / Consultants

- a) See other topical areas below.

3) Contractor

- a) See other topical areas below.

4) HAZMAT

- a) Hazmat abatement will start early 06/04/12. It will be a glove bag operation with powered fans to create a positive pressure environment. ERC asked HIG to have their sub-contractor provide the crew size and number of crews.
- b) ERC asked HIG mark the UV valves requiring abatement.
- c) AECOM asked the principal to inform the staff that Hazmat operations will start next week. The staff should not roam around the school unless they confer with the project superintendent.
- d) Light fixtures
 - i) HIG asked about the light fixtures which will be removed during the renovation
 - ii) They intend to remove and store on site for HISD to retrieve, if desired.
 - iii) AECOM said HISD may, or may not, want the fixtures, but the bulbs need to be handled as hazardous material. ERC concurred.

5) Safety

- a) No issues.

6) Schedule

- a) Two week look ahead and the project schedule are attached.
- b) End of school is 05/31/12 with faculty departing 06/01/12. Admin staff will pack up on 06/04/12 and move to Field ES the next day. They may need to return to Helms ES for items but not to permanently stay or work.
- c) Work should begin next week.
 - i) Turn off chiller
 - ii) Drain CW lines
 - iii) Hazmat abatement
 - iv) Restroom demolition

- d) AECOM asked the project superintendent be prepared at next week meeting to discuss with the plant operator specific work sequence.

7) Change Proposals Request (CPRs) and Change Orders

- a) See CPR log (attached).
- b) Three CPRs have been added – 16, 17, and 18.
- c) HIG said there is not cost for CPR 3
- d) CPRs 1 and 7
 - i) The school wants to retain the hand dryers so HIG adjusted CPR 7 accordingly.
 - ii) HIG provided paperwork. They need to provide backup for sub-contractor costs for CPR 7.

8) Submittals

- a) Submittal log is attached.
- b) HIG has submitted sixty-seven items. Last week they had submitted sixty-five items.
- c) Discussion on specific items:
 - i) Field measurements of the handrails are done. HIG will provide the submittal soon.
 - ii) Some confusion over light fixtures. HIG will confer with JE to clarify.
 - iii) PA system will be submitted as soon as HIG approves use of Convergent.
 - iv) FGC responded on storefront and ceramic tile. HIG needs to resubmit ceramic tile. FGC provided guidance on needed information.
 - v) JE said it is important to receive the submittals on the HVAC hangars and general duty valves.

9) Requests for Information (RFIs)

- a) Two RFIs – 4 and 5 – were answered by FGC
- b) There are no open RFIs

10) Record Drawings / Permit

- a) FGC they are still working with the COH fire marshal inspectors to resolve their questions.
- b) Note: the day after the meeting FGC sent notice that COH had approved the permit.

11) Pay Application

- a) HIG submitted a revised draft pay application #1 including the recent delivery of the unit ventilators. All concurred. AECOM asked HIG to complete and send to FGC for processing ASAP.

12) Site Observations

- a) Concrete has been poured for the OAHU pads, some of the steps, and in classroom 6. See attached photos.

Next Meeting – Wednesday, June 6, 2012 at 9:30 AM

These minutes were prepared to accurately report the discussions, issues and decisions made at the above referenced meeting. If any attendee does not agree with the statements made above, please provide corrections in writing within three (3) days of receipt; otherwise, it is deemed all meeting participants are in agreement with the contents.



HOUSTON INDEPENDENT SCHOOL DISTRICT
Construction Services (Bond Program)
3500 Tampa Street • Houston, Texas 77021-1244

AECOM

**SIGN-IN SHEET
HISD BOND PROGRAM**

Project: Helms Elementary School Renovation

Meeting Date / Time:

May 30, 2012, 9:30 AM

Meeting Purpose: Construction Meeting 9

Location: Helms ES

Name	Initial	Title	Company	Phone	Email Address
Tim Beally	<i>TMB</i>	PM	AECOM	713-267-3223	Tim.beally@aecom.com
Diana Del Pilar	<i>DDP</i>	Principal	HISD – Helms ES	713-867-5130	ddelpila@houstonisd.org
Brian Cox	<i>BMC</i>	Principal	Fehr Grossman Cox	713.797.0404	bcox@fgca.cc
Ron Hughes	<i>RH</i>	Project Manager	Jones Engineers	713-222-7766	rhuhges@jonesengineers.com
Wes Geyer		Project Manager	Horizon Intl. Group	832-347-7204	wgeyer@hgiusa.com
Russell McCown	<i>RM</i>	Project Manager	Horizon Intl. Group	832-752-0066	rmccown@hgiusa.com
Gary McMaster	<i>GM</i>	Superintendent	Horizon Intl. Group	281-413-8112	gmcmaster@hgiusa.com
Mike Afshar	<i>MA</i>	PM	ERC	713-290-9444	mafshar@erc-tx.com

1 2 3

5/30/2012

Submittal Log and Schedule - Helms Elementary School



Spec Section		Log of Required Submittals			Subcontractor	Schedule		Submittal Distribution			Disposition of Submittal				Horizon Group INTERNATIONAL		
		Total Open Submittals		Status / Revision		Description	Date HGI Requested	Date Due	Date Received	Date HGI Sent Out	Engineer / Architect	Date Returned to HGI	Date Returned to Subcontractor	Resubmittal Required			
		Total Submittals in HGI's Office												Y			N
Spec Section		Specification Subdivision	Status / Revision	Description	Subcontractor	Date HGI Requested	Date Due	Date Received	Date HGI Sent Out	Engineer / Architect	Date Returned to HGI	Date Returned to Subcontractor	Resubmittal Required	Notes			
													Y	N			
024119 Selective Demolition																	
		1.6C		Schedule of Demolition Activities													
		1.6D		Inventory of Demolition Items													
		1.6E		Predemolition Photographs													
029200 Lawns and Grasses																	
		1.4A		Product Data													
029500 Fences & Gates																	
		1.4A	Approved	Product Data & Shop Drawings	National Fence	04/09/12	04/09/12	04/09/12	04/10/12	Arch.	4/10/12	4/11/12		N			
033000 Cast-In-Place-Concrete																	
		1.2C		Dcsign Mixes	Elite	03/30/12	03/30/12	04/02/12	04/02/12	Arch.	4/30/12	5/1/12		N			
		1.2D	As Noted	Reinforcement Shop Drawings	Elite	03/30/12	03/30/12	04/03/12	04/03/12	Arch.	4/5/12	4/6/12		N			
		1.2E		Expanded Polystyrene (EPS) Geofoam	Elite	04/03/12	04/03/12	04/03/12	04/03/12	Arch.	4/5/12	4/6/12		N			
055213 Pipe and Tube Railings																	
		1.4A		Product Data	Gulf Coast												
		1.4B		Shop Drawings	Gulf Coast												
		1.5A		Paint Compatability	Gulf Coast												
061053 Miscellaneous Rough Carpentry																	
		1.4A		Product Data	Xtreme Const												
064023 Interior Architectural Woodwork																	
		1.4A		Product Data	Xtreme Const												
		1.4C		Shop Drawings	Xtreme Const												
		1.4D		Samples	Xtreme Const												
		1.4E		Product Certificates	Xtreme Const												
079200 Joint Sealants																	
		D.1		Product Data													
		D.2		Samples													
		D.4		Product Certificates													
081113 Hollow Metal Doors and Frames																	
		1.4A		Product Data	Xtreme Const												
		1.4B		Shop Drawings	Xtreme Const												
		1.4C		Samples	Xtreme Const												
082120 Solid Core Plastic Laminate Faced Doors																	


Submittal Log and Schedule - Helms Elementary School



		Log of Required Submittals					Schedule		Submittal Distribution	Disposition of Submittal					
		Total Open Submittals													
		Total Submittals in HGI's Office													
Spec Section		Specification Subdivision	Status / Revision	Description	Subcontractor	Date HGI Requested	Date Due	Date Received	Date HGI Sent Out	Engineer / Architect	Date Returned to HGI	Date Returned to Subcontractor	Resubmittal Required	Notes	
		C.1		Product Data	Xtreme Const										
		C.2		Shop Drawings	Xtreme Const										
		C.3		Samples	Xtreme Const										
084113 Aluminum Storefront															
		D.1		Product Data	Mares Glass	05/17/12	05/17/12	05/17/12	05/18/12	Arch					
		D.2		Manufacturer Certification	Mares Glass	05/17/12	05/17/12	05/17/12	05/18/12	Arch					
		D.3		Shop Drawings	Mares Glass	05/17/12	05/17/12	05/17/12	05/18/12	Arch					
		D.4		Samples for Color Selection	Mares Glass										
		D.5		Samples for verification of Finishes	Mares Glass										
087100 Door Hardware															
		1.4A		Product Data	Xtreme Const	04/30/12	04/30/12	04/30/12	04/30/12	Arch.	5/1/12	5/2/12	Y		
		1.4B		Hardware Schedule	Xtreme Const										
		1.4C		Keying Information	?										
088000 Glazing															
		1.5A		Product Data/Shop Drawings	Mares Glass										
		1.5B		Samples of Glass	Mares Glass										
		1.5C		Samples of Gaskets	Mares Glass										
		1.5D		Manufacturer Certificate	Mares Glass										
		1.5F		Sealant Test Reports	Mares Glass										
092200 Portland Cement Plaster															
		1.3A		Product Data											
		1.3B		Shop Drawings											
		1.3C		Samples for Initial Selection											
		1.3D		Samples for Verification											
092210 Non-Structural Metal Framing															
		1.3A		Product Data	ABC Const.										
092900 Gypsum Board															
		1.3A		Product Data	ABC Const.										
		1.3B		Samples	ABC Const.										
093100 Ceramic Tile															
		1.5A		Product Data	Bus. Floor Sol,	03/30/12	03/30/12	04/02/12	04/02/12	Arch	4/17/12	4/18/12	Y	Submit Product Samples	
		1.5C		Samples for Initial Selection	Bus. Floor Sol,	05/15/12	05/15/12	05/15/12	05/16/12	Arch.					
		1.5D		Samples for Verification	Bus. Floor Sol,	05/15/12	05/15/12	05/15/12	05/16/12	Arch.					
095113 Acoustical Panel Ceilings															
		1.5A		Product Data	ABC Const.										
		1.5C		Samples	ABC Const.										
096516 Resilient Sheet Flooring															
		1.3A		Product Data	Bus. Floor Sol,	03/30/12	03/30/12	04/02/12	04/02/12	Arch	4/17/12	4/18/12	Y	Submit Product Samples	
		1.3C		Samples	Bus. Floor Sol,										
096519 Resilient Tile Flooring															
		1.3A		Product Data	Bus. Floor Sol,	03/30/12	03/30/12	04/02/12	04/02/12	Arch	4/17/12	4/18/12	Y	Submit Product Samples	

Submittal Log and Schedule - Helms Elementary School



		Log of Required Submittals			Schedule		Submittal Distribution			Disposition of Submittal								
		Total Open Submittals																
		Total Submittals in HGI's Office																
Spec Section		Specification Subdivision	Status / Revision	Description	Subcontractor	Date HGI Requested	Date Due	Date Received	Date HGI Sent Out	Engineer / Architect	Date Returned to HGI	Date Returned to Subcontractor	Resubmittal Required		Notes			
096520 Resilient Base and Accessories		1.3C		Samples	Bus. Floor Sol,													
		1.3a		Product Data	Bus. Floor Sol,													
		1.3B		Samples	Bus. Floor Sol,													
099113 Exterior Painting																		
		1.3A		Product Data														
		1.3B		Samples														
		1.3C		Product List														
99123 Interior Painting																		
		1.3A		Product Data														
		1.3B		Samples														
		1.3C		Product List														
101000 Marker boards and Tack boards																		
		1.10	As Noted	Product Data	Newline	04/03/12	04/10/12	04/10/12	04/10/12	Arch.	4/17/12	4/17/12		N				
		1.10	As Noted	Tack Board Color Chart	Newline	04/03/12	04/10/12	04/10/12	04/10/12	Arch.	4/17/12	4/17/12		N				
101550 Toilet Compartments																		
		1.3 A	As Noted	Product Data	PBJ Spec.	03/27/12	03/27/12	03/27/12	03/30/12	Arch	4/3/12	4/4/12		N				
		1.3B	As Noted	Shop Drawings	PBJ Spec.	03/27/12	03/27/12	03/27/12	03/30/12	Arch	4/3/12	4/4/12		N				
		1.3C	As Noted	Color Samples	PBJ Spec.	03/27/12	03/27/12	03/27/12	03/30/12	Arch	4/3/12	4/4/12		N				
102800 Toilet Accessories																		
		1.2A	As Noted	Product Data	PBJ Spec.	03/27/12	03/27/12	03/27/12	03/28/12	Arch	4/17/12	4/17/12		N				
104410 Interior Unframed Signs																		
		1.3B		Product Data	Nova Graphics													
		1.3C		Shop Drawings	Nova Graphics													
		1.3D		Samples	Nova Graphics													
122113 Horizontal Louver Blinds																		
		1.3A	As Noted	Product Data	Capitol Blind	03/30/12	04/04/12	04/04/12	04/25/12	Arch	5/1/12	5/2/12		N				
		1.3B	As Noted	Shop Drawings	Capitol Blind	03/30/12	04/04/12	04/04/12	04/25/12	Arch	5/1/12	5/2/12		N				
		1.3C	As Noted	Color Samples	Capitol Blind	03/30/12	04/04/12	04/04/12	04/25/12	Arch	5/1/12	5/2/12		N				
22 05 23 General Duty Valves for Plumbing Piping																		
		1.4A	Approved	Product Data	Unique Plumb	03/30/12	04/05/12	04/05/12	04/06/12	Eng.	4/10/12	4/10/12		N				
22 05 29 Hangers and Supports for Plumbing Piping and Equipment																		
		1.5A	Approved	Product Data	Unique Plumb	03/30/12	04/05/12	04/05/12	04/06/12	Eng.	4/10/12	4/10/12		N				
22 07 19 Plumbing Piping Insulation																		
		1.3A	Approved	Product Data	Unique Plumb	03/30/12	04/05/12	04/05/12	04/06/12	Eng.	4/10/12	4/10/12		N				
		1.3D	Approved	Material Test Reports	Unique Plumb	03/30/12	04/05/12	04/05/12	04/06/12	Eng.	4/10/12	4/10/12		N				
22 11 16 Domestic Water Piping																		

Submittal Log and Schedule - Helms Elementary School



		Log of Required Submittals				Schedule	Submittal Distribution	Disposition of Submittal							Notes
		Total Open Submittals		Total Submittals in HGI's Office											
Spec Section		Specification Subdivision	Status / Revision	Description	Subcontractor	Date HGI Requested	Date Due	Date Received	Date HGI Sent Out	Engineer / Architect	Date Returned to HGI	Date Returned to Subcontractor	Resubmittal Required		
		1.3A	Approved	Product Data	Unique Plumb	03/30/12	04/05/12	04/05/12	04/06/12	Eng.	4/10/12	4/10/12		N	
22 11 19 Domestic Water Piping Specialties															
		1.4A	As Noted	Product Data	Unique Plumb	03/30/12	04/05/12	04/05/12	04/06/12	Eng.	4/13/12	4/16/12		N	
22 13 16 Sanitary Waste and Vent Piping															
		1.4A	Approved	Product Data	Unique Plumb	03/30/12	04/05/12	04/05/12	04/06/12	Eng.	4/10/12	4/10/12		N	
22 40 00 Plumbing Fixtures															
		1.4A	As Noted	Product Data	Unique Plumb	03/30/12	04/05/12	04/05/12	04/06/12	Eng.	4/13/12	4/16/12	Y		re-submit items requested
22 47 0 Drinking Fountains and Water Coolers															
		1.4A	Approved	Product Data	Unique Plumb	03/30/12	04/05/12	04/05/12	04/06/12	Eng.	4/10/12	4/10/12		N	
23 05 18 Escutcheons for HVAC Piping															
		1.3A		Product Data	LMI										
23 05 19 Meters and Gauges for HVAC Piping															
		1.3A		Product Data	LMI										
23 05 23 General Duty Valves for HVAC Piping															
		1.4A		Product Data	LMI										
23 05 29 Hangers and Supports for HVAC Piping & Equipment															
		1.5A		Product Data	LMI										
23 05 53 Identification for HVAC Piping & Equipment															
		1.3A		Product Data	LMI										
		1.3B		Equipment Label Schedule	LMI										
23 05 93 Testing, Adjusting, and Balancing for HVAC															
		1.4A	Approved	Qualification Data	LMI										
		1.4B	Approved	Contract Documents Examination Report	LMI										
		1.4D	Approved	Certified TAB Reports	LMI										
		1.4F	Approved	Instrument Calibration Reports	LMI										
23 07 00 HVAC Insulation															
		1.3A		Product Data	LMI	05/24/12	05/24/12	05/24/12	05/24/12	Eng.					
		1.3C		Material Test Reports	LMI	05/24/12	05/24/12	05/24/12	05/24/12	Eng.					
23 07 19 HVAC Piping Insulation															
		1.1	As Noted	Product Data	LMI	05/09/12	05/09/12	05/09/12	05/09/12	Eng.	5/11/12	5/14/12		N	
		1.1 R1		Product Data	LMI	05/23/12	05/23/12	05/23/12	05/23/12	Eng.					
23 09 00 Instrumentation and Control for HVAC															
		1.1A	R & R	Product Data - Valve & Damper	LMI	04/20/12	04/20/12	04/20/12	04/24/12	Eng.	4/24/12	5/1/12	Y		
		1.1A-1	R & R	Product Data - Motor Starter	LMI	04/20/12	04/20/12	04/20/12	04/24/12	Eng.	4/24/12	5/1/12	Y		
		1.1B		Shop Drawings	LMI										
23 09 01 HVAC Lighting Control Integrated with BAS															
		1.1A		Product Data	LMI										
		1.1B		Shop Drawings	LMI										
23 21 13 Hydronic Piping															
		1.5A		Product Data	LMI										
		1.5B		Shop Drawings	LMI										

Submittal Log and Schedule - Helms Elementary School



		Log of Required Submittals				Schedule	Submittal Distribution	Disposition of Submittal							Horizon Group INTERNATIONAL
		Total Open Submittals													
		Total Submittals in HGI's Office													
Spec Section		Specification Subdivision	Status / Revision	Description	Subcontractor	Date HGI Requested	Date Due	Date Received	Date HGI Sent Out	Engineer / Architect	Date Returned to HGI	Date Returned to Subcontractor	Resubmittal Required		Notes
		1.5G		Water Analysis	LMI										
23 21 23 Hydronic Pumps															
		1.4A	Approved	Product Data	LMI	03/30/12	04/06/12	4-5-12	04/06/12	Eng.	4/10/12	4/10/12		N	
23 31 13 Metal Ducts															
		1.4A	Approved	Product Data	LMI	03/14/12	03/21/12	03/21/12	03/22/12	Eng.	3/27/12	3/29/12		N	
		1.4B		Shop Drawings	LMI										
23 33 00 Air Duct Accessories															
		1.3A	Approved	Product Data	LMI	03/14/12	03/21/12	03/21/12	03/22/12	Eng.	3/27/12	3/29/12		N	
		1.3B		Shop Drawings	LMI										
23 34 23 Power Ventilators															
		1.4A		Product Data	LMI	05/15/12	05/15/12	05/15/12	05/16/12	Eng.					
23 37 13 Diffusers, Registers, & Grilles															
		1.3A	Approved	Product Data	LMI	03/14/12	03/21/12	03/21/12	03/22/12	Eng.	3/27/12	3/29/12		N	
23 41 00 Particulate Air Filtration															
		1.3A		Product Data	LMI										
23 62 00 Packaged Compressor and Condenser Units															
		1.3A		Product Data	LMI										
		1.3B		Shop Drawings	LMI										
23 73 14 Modular Outdoor Central Station Air-Handling Units															
		1.3A		Product Data	LMI										
23 74 33 Packaged Outdoor Heating and Cooling Make-up Air Conditioners															
		1.4A	R&R	Product Data	LMI	03/14/12	03/29/12	03/30/12	03/30/12	Eng.	3/30/12	4/2/12	Y		
		1.4A R1		Product Data	LMI	04/30/12	04/30/12	04/30/12	04/30/12	Eng.	5/1/12	5/1/12		N	
		1.4B	R&R	Shop Drawings	LMI	03/14/12	03/29/12	03/30/12	03/30/12	Eng.	3/30/12	4/2/12	Y		
		1.4B R1		Shop Drawings	LMI	04/30/12	04/30/12	04/30/12	04/30/12	Eng.	5/1/12	5/1/12		N	
23 82 19 Fan Coil Units															
		1.4A	As Noted	Product Data	LMI	03/14/12	03/29/12	03/29/12	03/29/12	Eng.	4/10/12	4/10/12	Y		
		1.4A R1	As Noted	Product Data	LMI	04/20/12	04/20/12	04/20/12	04/24/12	Eng.	4/27/12	4/27/12	Y		Re-submit Fcu's 5 & 5A
		1.4A R2	Approved	Product Data	LMI	04/30/12	04/30/12	04/30/12	04/30/12	Eng.	04/30/12	04/30/12		N	
		1.4B	As Noted	Shop Drawings	LMI	03/14/12	03/29/12	03/29/12	03/29/12	Eng.	4/10/12	4/10/12	Y		
		1.4B R1	As Noted	Shop Drawings	LMI	04/20/12	04/20/12	04/20/12	04/24/12	Eng.	4/27/12	4/27/12	Y		Re-submit Fcu's 5 & 5A
		1.4B R2	Approved	Shop Drawings	LMI	04/30/12	04/30/12	04/30/12	04/30/12	Eng.	04/30/12	04/30/12		N	
		1.4C		Color Samples	LMI										
23 82 23 Unit Ventilators															
		1.4A	Approved	Product Data	LMI	03/14/12	03/29/12	03/29/12	03/29/12	Eng.	3/30/12	3/30/12		N	
		1.4B		Shop Drawings	LMI	03/14/12	03/29/12	03/29/12	03/29/12	Eng.	3/30/12	3/30/12		N	
260200 Basic Materials & Methods															
		1.07C		Shop Drawings	State Wide Elec										
		1.07D		Product Data	State Wide Elec										
260300 Electrical Demolition Work															
		3.01F		Salvage List	State Wide Elec										

Submittal Log and Schedule - Helms Elementary School



Submittal Log and Schedule - Helms Elementary School														
Spec Section		Log of Required Submittals				Schedule		Submittal Distribution			Disposition of Submittal			
		Total Open Submittals												
		Total Submittals in HGI's Office												
Spec Section		Specification Subdivision	Status / Revision	Description	Subcontractor	Date HGI Requested	Date Due	Date Received	Date HGI Sent Out	Engineer / Architect	Date Returned to HGI	Date Returned to Subcontractor	Resubmittal Required	Notes
260500 Common Work Results for Electrical														
		1.4A		Product Data - Sleeve Seals	State Wide Elec									
26 05 63 Identification for Electrical Systems														
		1.2A		Product Data	State Wide Elec									
26 05 19 Low Voltage Electrical Power Conductors and Cables														
		1.4A		Product Data	State Wide Elec									
		1.4B		Qualification Data: for testing agency	State Wide Elec									
		1.4C		Field Quality -Control test reports	State Wide Elec									
26 05 26 Grounding & Bonding for Electrical Systems														
		1.3A		Product Data	State Wide Elec									
		1.3B		Qualification Data	State Wide Elec									
		1.3C		Field Quality Control test reports	State Wide Elec									
		1.3D		O&M Data - Close Outs	State Wide Elec									
26 05 29 Hangers & Supports for Electrical Systems														
		1.5A		Product Data	State Wide Elec									
26 05 33 Raceway & Boxes for Electrical Systems														
		1.4A		Product Data	State Wide Elec									
		1.4B		Shop Drawings	State Wide Elec									
26 09 24 Electrical Lighting Control Integrated with BAS														
		1.1E		Shop Drawings	State Wide Elec									
26 24 16 Panel boards														
		1.5A	As Noted	Product Data	State Wide Elec	04/05/12	04/05/12	04/20/12	04/25/12	Eng.	4/26/12	4/27/12	N	
		1.5B		Qualification Data	State Wide Elec									
		1.5C		Field Quality Control Reports	State Wide Elec									
		1.5D	As Noted	Panel board Schedules	State Wide Elec	04/05/12	04/05/12	04/20/12	04/25/12	Eng.	4/26/12	4/27/12	N	
		1.5E		O&M Data - Close Outs	State Wide Elec									
26 27 26 Wiring Devices														
		1.4A		Product Data	State Wide Elec									
		1.4B		Shop Drawings	State Wide Elec									
		1.4C		Samples	State Wide Elec									
		1.4D		Field Quality Control Reports	State Wide Elec									
		1.4E		O&M Data - Close Outs	State Wide Elec									
26 28 16 Enclosed Switches & Circuit Breakers														
		1.5A		Product Data	State Wide Elec									
		1.5B		Field Quality Control Reports	State Wide Elec									
		1.5C		Manufacturers Field Service Report	State Wide Elec									
		1.5D		O&M Manuals - Closeout	State Wide Elec									
26 29 23 Variable Frequency Motor Controllers - Installation														
		1.8A		Training Sign in Sheet	State Wide Elec									
26 51 00 Interior Lighting														
		1.3A	R&R	Product Data	State Wide Elec	04/06/12	04/06/12	04/06/12	04/09/12	Eng.	4/10/12	4/10/12	Y	
		1.3B	R&R	Installation Instructions	State Wide Elec	04/06/12	04/06/12	04/06/12	04/09/12	Eng.	4/10/12	4/10/12	Y	
		1.3C	R&R	Qualification Data	State Wide Elec	04/06/12	04/06/12	04/06/12	04/09/12	Eng.	4/10/12	4/10/12	Y	

Submittal Log and Schedule - Helms Elementary School

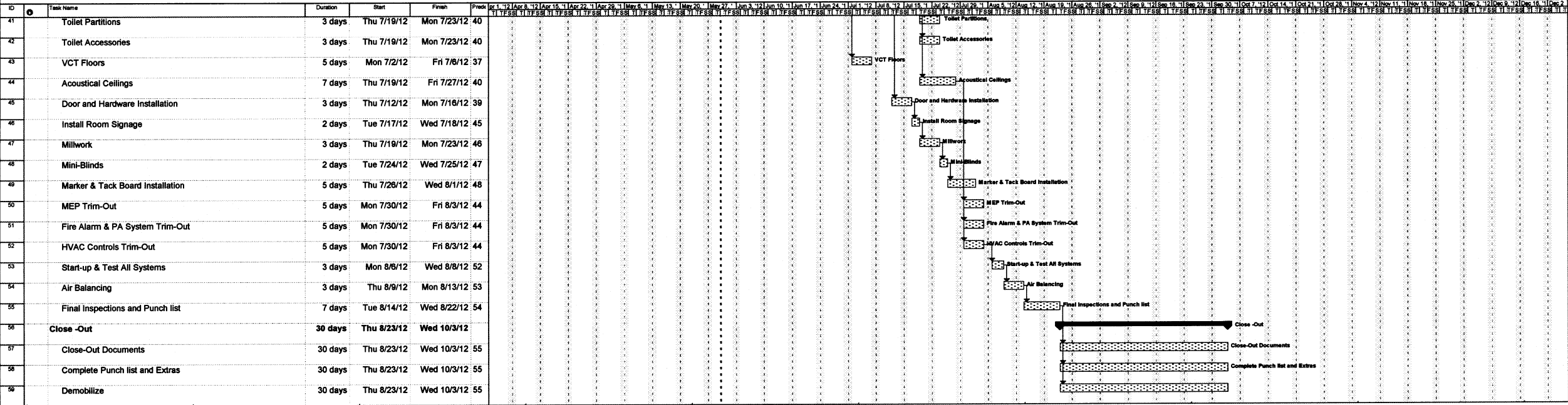


		Log of Required Submittals				Schedule		Submittal Distribution			Disposition of Submittal			
		Total Open Submittals												
		Total Submittals in HGT's Office												
Spec Section		Specification Subdivision	Status / Revision	Description	Subcontractor	Date HGT Requested	Date Due	Date Received	Date HGT Sent Out	Engineer / Architect	Date Returned to HGT	Date Returned to Subcontractor	Resubmittal Required	
		1.3D	R&R	Product Certificates	State Wide Elec	04/06/12	04/06/12	04/06/12	04/09/12	Eng.	4/10/12	4/10/12	Y	
		1.3E	R&R	Field Quality Control Reports	State Wide Elec	04/06/12	04/06/12	04/06/12	04/09/12	Eng.	4/10/12	4/10/12	Y	
		1.3F		O&M Manuals - Closeout	State Wide Elec									
26 56 00 Exterior Lighting														
		1.5A	R&R	Product Data	State Wide Elec	04/06/12	04/06/12	04/06/12	04/09/12	Eng.	4/10/12	4/10/12	Y	
		1.5E	R&R	Qualification Data	State Wide Elec	04/06/12	04/06/12	04/06/12	04/09/12	Eng.	4/10/12	4/10/12	Y	
		1.5F	R&R	Field Quality Reports	State Wide Elec	04/06/12	04/06/12	04/06/12	04/09/12	Eng.	4/10/12	4/10/12	Y	
		1.5G		O&M Manuals - Closeout	State Wide Elec									
		1.5H		Warranty - Sample of special warranty	State Wide Elec									
27 51 00 Intercom														
		1.1		Product Data - Shop Drawings	AFS									
28 31 11 Digital Addressable Fire Alarm System														
		1.4A	Approved	Product Data	AFS	05/09/12	05/09/12	05/09/12	05/09/12	Eng.	5/17/12	5/18/12		N
		1.4B	Approved	Shop Drawings	AFS	05/09/12	05/09/12	05/09/12	05/09/12	Eng.	5/17/12	5/18/12		N
		1.4C	Approved	Suppliers Qualifications	AFS	05/09/12	05/09/12	05/09/12	05/09/12	Eng.	5/17/12	5/18/12		N
		1.4D		Hourly Service Rate Schedule	AFS									
		1.4E		O&M Manuals - Close Out	AFS									
		1.4F		Warranty - Close Out	AFS									

Helms Elementary School

ID	Task Name	Duration	Start	Finish	Predecessors
1	Preconstruction Activities	31 days	Mon 4/2/12	Mon 5/14/12	
2	Receive Notice to Proceed	1 day	Mon 4/2/12	Mon 4/2/12	1
3	Submittal Approval & Ordering Equipment	30 days	Tue 4/3/12	Mon 5/14/12	2
4	Temporary Fencing	1 day	Tue 4/3/12	Tue 4/3/12	3
5	SWPPP	2 days	Tue 4/3/12	Wed 4/4/12	4
6	Set-Up Trailer & Lay down Area	2 days	Thu 4/5/12	Fri 4/6/12	5
7	Install Construction Signage	2 days	Mon 4/9/12	Tue 4/10/12	6
8	Site Work	25 days	Mon 5/21/12	Fri 6/22/12	7
9	Install Geo Forms and Pour 4" Topping Slab	3 days	Mon 5/21/12	Wed 5/23/12	8
10	Clean Inlets and Lines	2 days	Thu 5/31/12	Fri 6/1/12	9
11	Adjust Top of Existing Grates for Proper Drainage	2 days	Mon 6/4/12	Tue 6/5/12	10
12	Remove Concrete Sidewalk	2 days	Mon 5/21/12	Tue 5/22/12	11
13	Re-Grade Areas and Add Fill for Proper Drainage	3 days	Thu 5/31/12	Mon 6/4/12	12
14	Demo Exterior Stairs and Landings (incl. Railings)	3 days	Mon 5/28/12	Wed 5/30/12	13
15	Install New Exterior Concrete Stairs and Landings	5 days	Thu 5/31/12	Wed 6/6/12	14
16	Install New Railings and Angle Edging	3 days	Thu 6/7/12	Mon 6/11/12	15
17	Install New Sod at Disturbed Areas	2 days	Tue 6/12/12	Wed 6/13/12	16
18	Re-Stripe Handicap Parking Spaces	1 day	Thu 6/14/12	Thu 6/14/12	17
19	Install New Handicap Signage & Poles	1 day	Fri 6/15/12	Fri 6/15/12	18
20	Demo Existing Marquee Sign	2 days	Mon 6/18/12	Tue 6/19/12	19
21	Install New Foundation, Power and Data for Marquee Sign	3 days	Wed 6/20/12	Fri 6/22/12	20
22	Buildings	58 days	Mon 6/4/12	Wed 8/22/12	21
23	Asbestos Abatement	3 days	Mon 6/4/12	Wed 6/6/12	22
24	Plumbing Demolition @ Restrooms	4 days	Thu 6/7/12	Tue 6/12/12	23
25	Wall, Partitions, Doors, & Frames Demolition @ Restrooms	4 days	Thu 6/7/12	Tue 6/12/12	24
26	Ceiling Demolition	4 days	Thu 6/7/12	Tue 6/12/12	25
27	Flooring Demolition	2 days	Thu 6/7/12	Fri 6/8/12	26
28	HVAC Demolition	5 days	Thu 6/7/12	Wed 6/13/12	27
29	Electrical Demolition	5 days	Thu 6/7/12	Wed 6/13/12	28
30	Fire Alarm & PA System Demolition	5 days	Thu 6/7/12	Wed 6/13/12	29
31	Plumbing Rough-in @ Restrooms	10 days	Wed 6/13/12	Tue 6/26/12	30
32	Electrical Rough-in Through-Out Building	25 days	Thu 6/7/12	Wed 7/11/12	31
33	HVAC Rough-in Through-Out Building	25 days	Thu 6/7/12	Wed 7/11/12	32
34	Fire Alarm & PA System Rough-in Through-Out Building	14 days	Thu 6/7/12	Tue 6/26/12	33
35	HVAC Controls Rough-in	14 days	Thu 6/14/12	Tue 7/3/12	34
36	Glass & Glazing (including demolition)	5 days	Wed 7/4/12	Tue 7/10/12	35
37	Drywall Work @ Restrooms	3 days	Wed 6/27/12	Fri 6/29/12	36
38	Ceramic Tile @ Restrooms	5 days	Mon 7/2/12	Fri 7/6/12	37
39	Paint Walls @ Restrooms	3 days	Mon 7/9/12	Wed 7/11/12	38
40	Plumbing Fixtures	5 days	Thu 7/12/12	Wed 7/18/12	39

Helms Elementary School



\$12,080.09	0	\$12,080.09	\$0.00	0
-------------	---	-------------	--------	---

[illegible]



